

Medical Office Space – Available for Lease

Ground Floor, 536 Walnut Lane, Philadelphia, PA 19128

Property Information:

- **Building Area:** ± 1,350 Sq. Ft.
- **Lot Size:** ± 7,814 Sq. Ft.
- **Rent:** \$3,100.00 Sq. Ft. + NNN
- **Zoning:** RSD-2 Medial Office Mixed-Use

Property Highlight(s):

- Significant Front Street Signage/Exposure
- 15-18 On-Site Vehicle Parking
- Fenced Lot

Ideal Uses:

- Medical
- Beauty
- Professional Offices



DEMOGRAPHICS

1 Mile

| | |
|-------------------|--------|
| Population | 23,295 |
| Households | 10,680 |
| Daytime Employees | 8,138 |

Boris Verbitsky

(617)840-1735 | boris@crp-co.com

Corporate Realty Partners & Co., Inc.

209 Chestnut St., Suite 300

Philadelphia, PA 19106

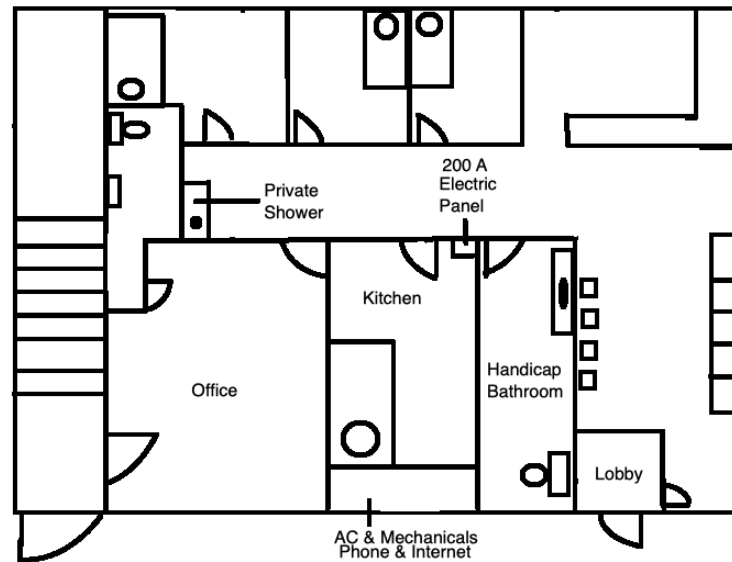
www.crp-co.com

G. Kevin Smith

(215)778-4633 | gksmith@crp-co.com

Medical Office Space – Available for Lease

Ground Floor, 536 Walnut Lane, Philadelphia, PA 19128



Medical Office Space – Available for Lease

Ground Floor, 536 Walnut Lane, Philadelphia, PA 19128

