

## Lease – School, Daycare & Training Space

1628-32 N 16<sup>th</sup> Street, Philadelphia, PA 19121

### Info:

- 10,800 +/- Sq. Ft. Building
- 3 Story Existing School
- 3,600 +/- Sq. Ft. Floors
- Land Area: 6,463 +/- Sq. Ft.
- Rent: \$20.00 Sq. Ft. + NNN
- RE Tax: \$7,500.00, Ins.: \$5,800.00
- Zoned: RM-1

### Area:

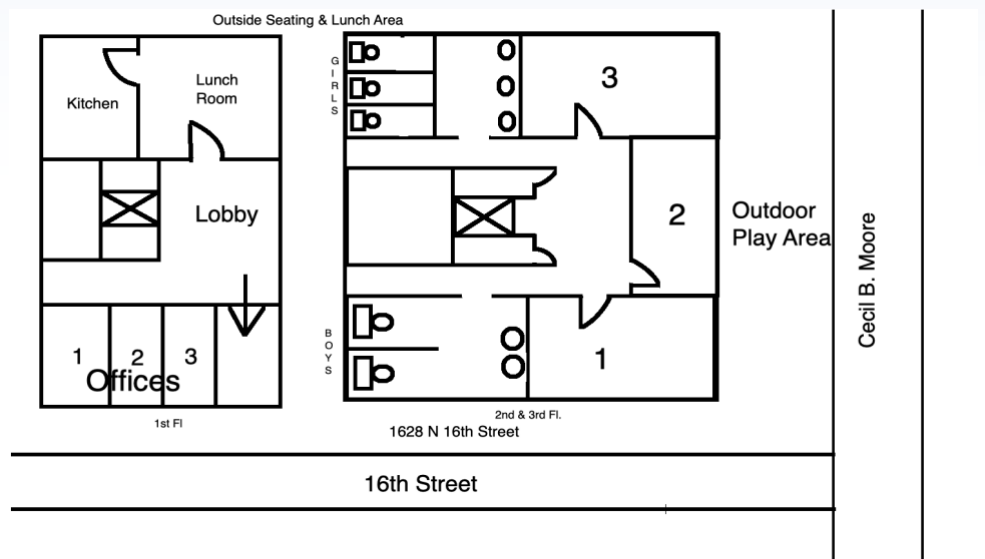
- Cecil B Moore
- North Central Philadelphia
- Temple University Main Campus
- Temple Town

### Location:

- 16<sup>th</sup> & Cecil B. Moore

### Public Transportation:

- Bus Routes: 2, 16, BSO, 3
- Broad Street Subway



[For additional info visit website!](#)

**Lease – School, Daycare & Training Space**

1628-32 N 16<sup>th</sup> Street, Philadelphia, PA 19121



**Demographics**

	1 Mile	3 Miles
Population	79,745	488,347
Households	28,105	203,229
Average Age	33.20	35.40
Median HH Income	25,735	45,675
Daytime Employees	16,399	400,577
Population Growth '16-21	↑ 4.2%	↑ 2.9%
Household Growth '16-21	↑ 4.4%	↑ 3.1%

**Traffic Counts**

Collection St	Cross St	Traffic Vol
W Columbia Ave	N Willington St W	4,536
W Columbia Ave	W Willington St W	4,817
N 16 <sup>th</sup> St	W Oxford St S	3,791
Cecil B Moore Ave	N Bouvier St W	5,293
N 15 <sup>th</sup> St	W Oxford St W	3,261